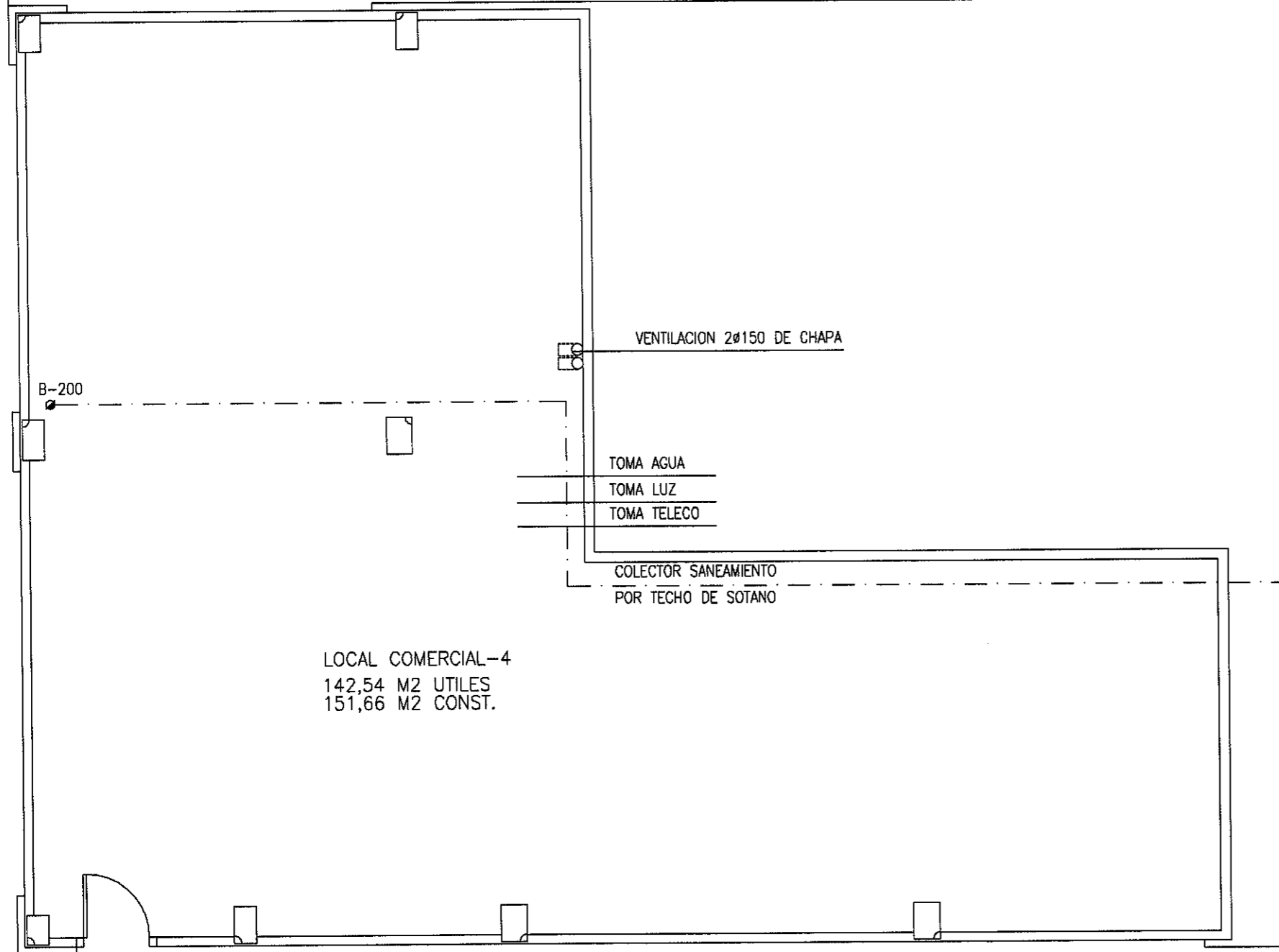


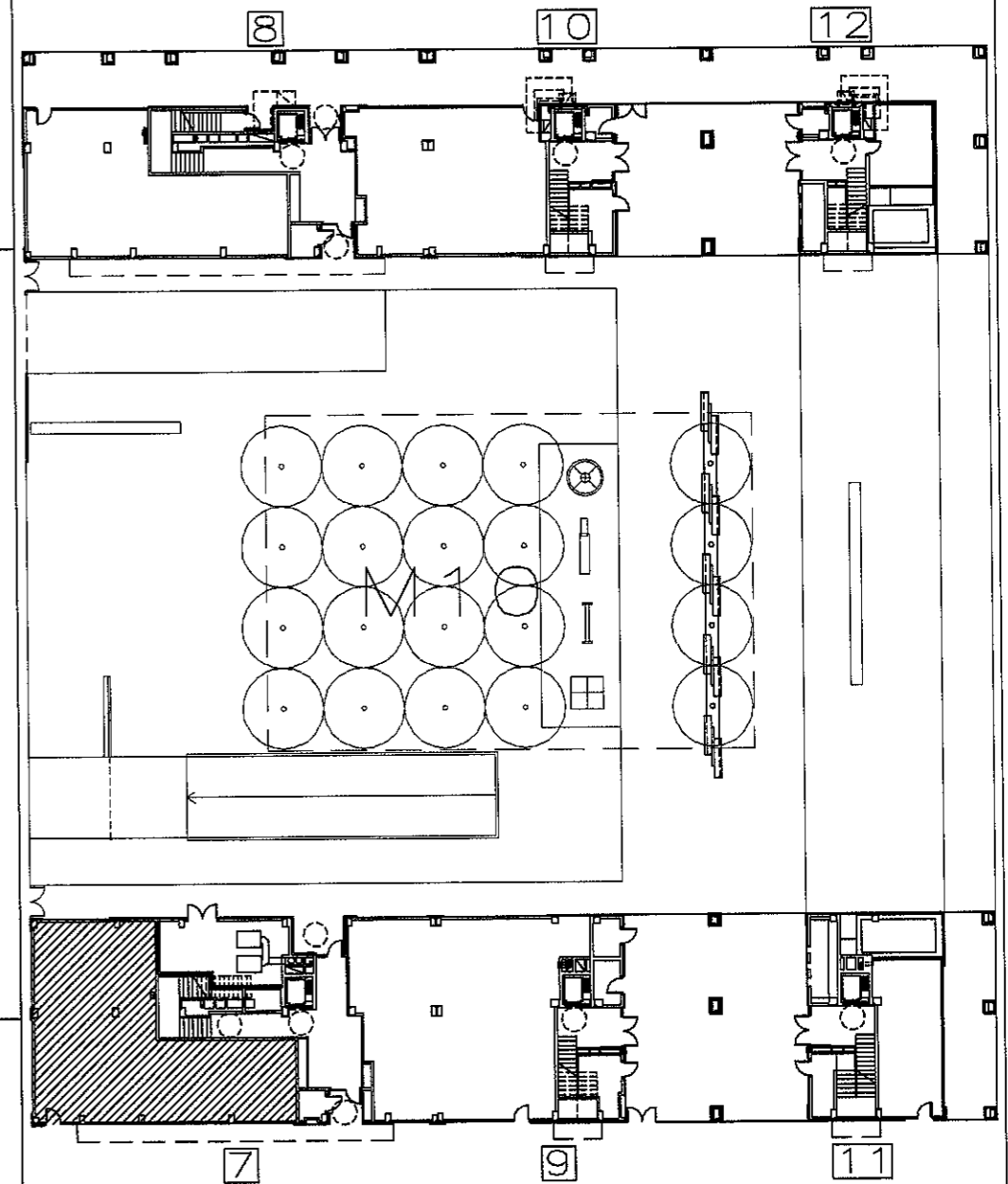
C / ESTOCOLMO



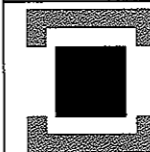
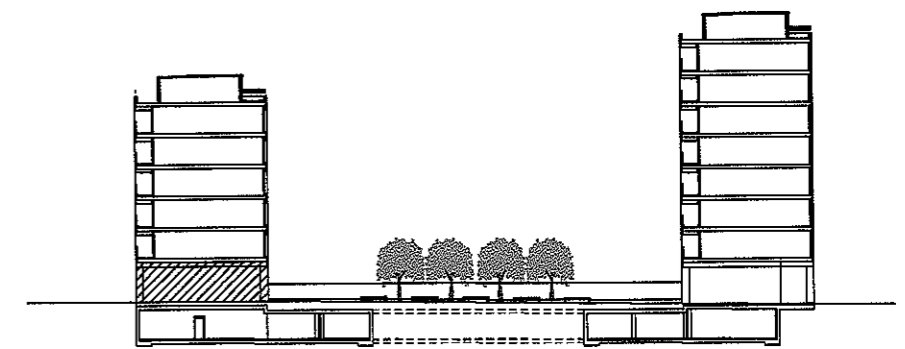
LOCAL COMERCIAL-4  
142,54 M2 UTILES  
151,66 M2 CONST.

C / PASEO BERLIN

C / HELSINKI



C / PASEO BERLIN



**visesa**

PARCELA	M10	LURSAILA
PORTAL Nº		ATARI zk.
PLANTA	BAJA	SOLAIRUA
LOCAL COMERCIAL	4	MERKATARITZA-LOKALA
SUPERFICIE UTIL	142,54 m2	AZALERA ERABILGARRIA
REF. PROYECTO	A-12	PROIEKTUAREN ERRF.
Nº INTERNO	307	BARNE zk.

298 VIVIENDAS SOCIALES, ANEJOS, LOCALES COMERCIALES Y GARAJES.  
298 ETXEBIZITZA SOZIAL, ERANSKIN, LOKAL ETA GARAJEAK.

C / BERLIN Nº 7  
SALBURUA, VITORIA-GASTEIZ