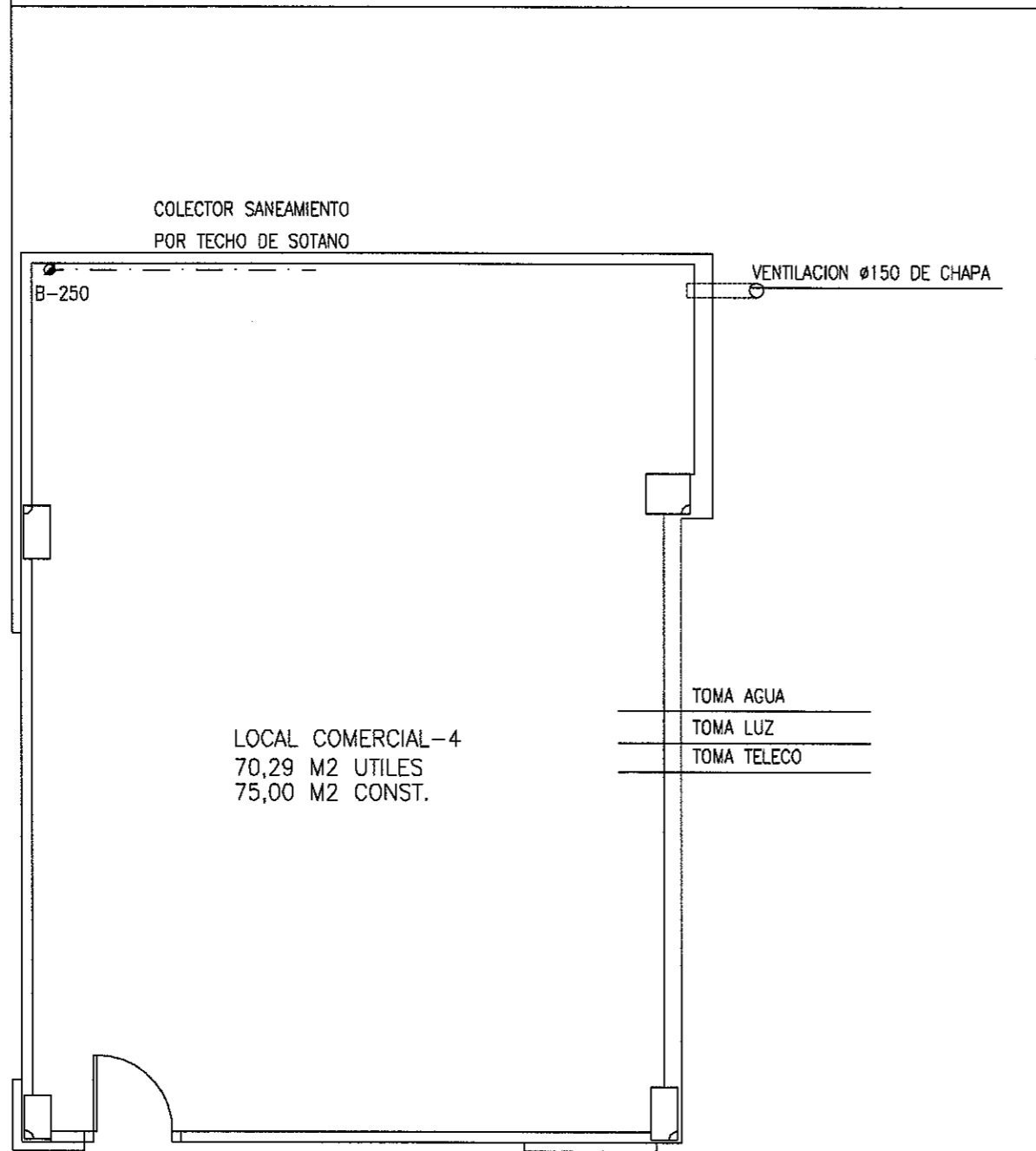
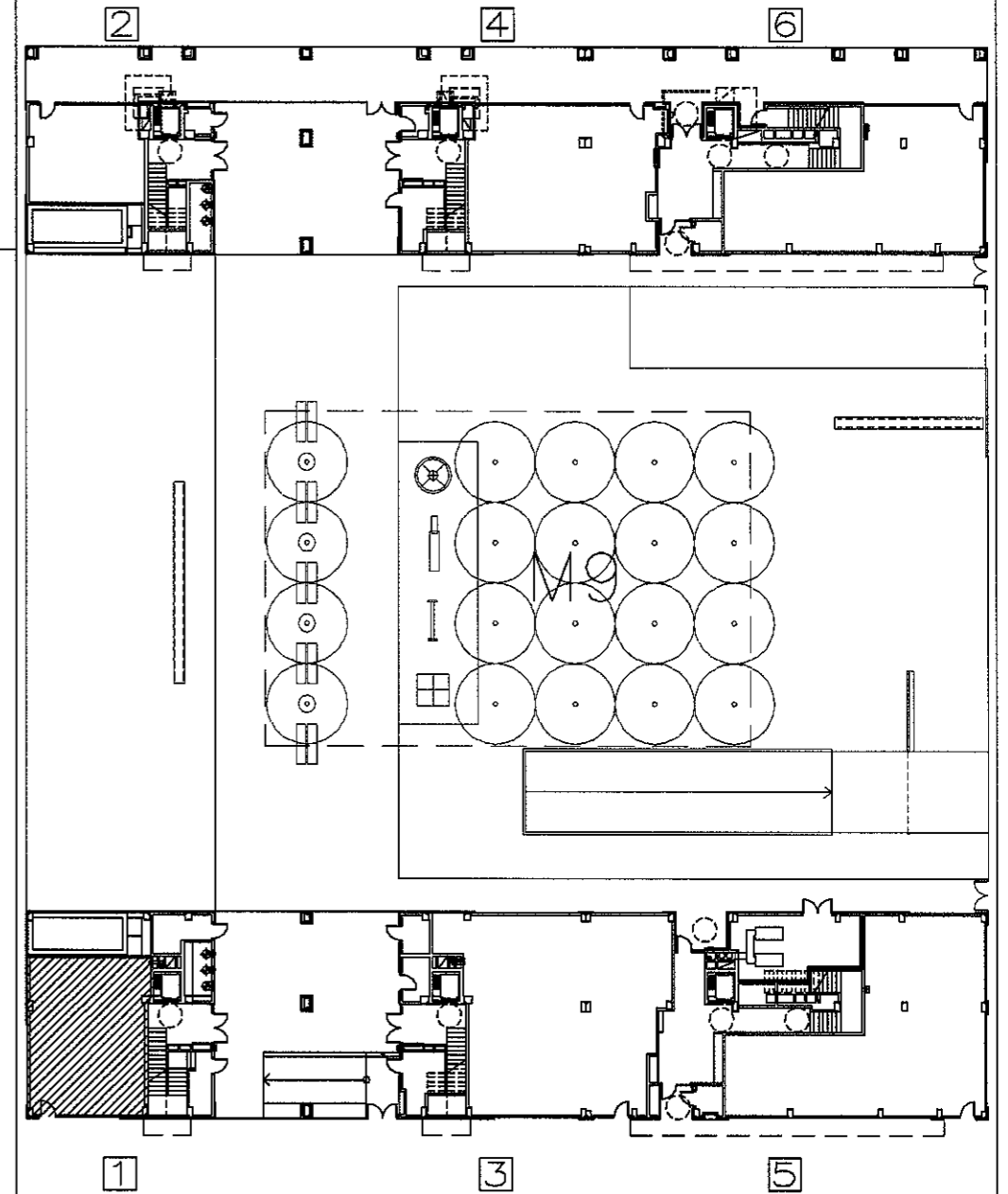


AVDA. DE LONDRES

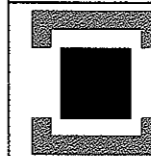
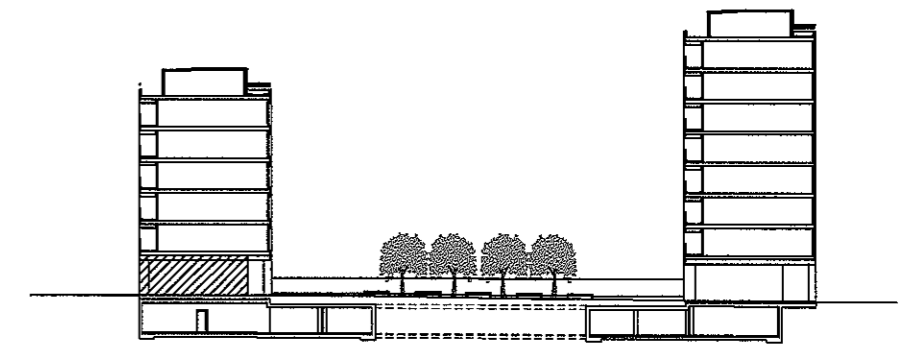


C / PASEO BERLIN

C / HELSINKI



C / PASEO BERLIN



visesa

|                 |          |                      |
|-----------------|----------|----------------------|
| PARCELA         | M9       | LURSAILA             |
| PORTAL Nº       |          | ATARI zk.            |
| PLANTA          | BAJA     | SOLAIRUA             |
| LOCAL COMERCIAL | 4        | MERKATARITZA-LOKALA  |
| SUPERFICIE UTIL | 70,29 m2 | AZALERA ERABILGARRIA |
| REF. PROYECTO   | A-12     | PROIEKTUAREN ERRF.   |
| Nº INTERNO      | 302      | BARNE zk.            |

298 VIVIENDAS SOCIALES, ANEJOS, LOCALES COMERCIALES Y GARAJES.  
298 ETXEBIZITZA SOZIAL, ERANSKIN, LOKAL ETA GARAJEAK.

C / BERLIN Nº 1  
SALBURUA, VITORIA-GASTEIZ